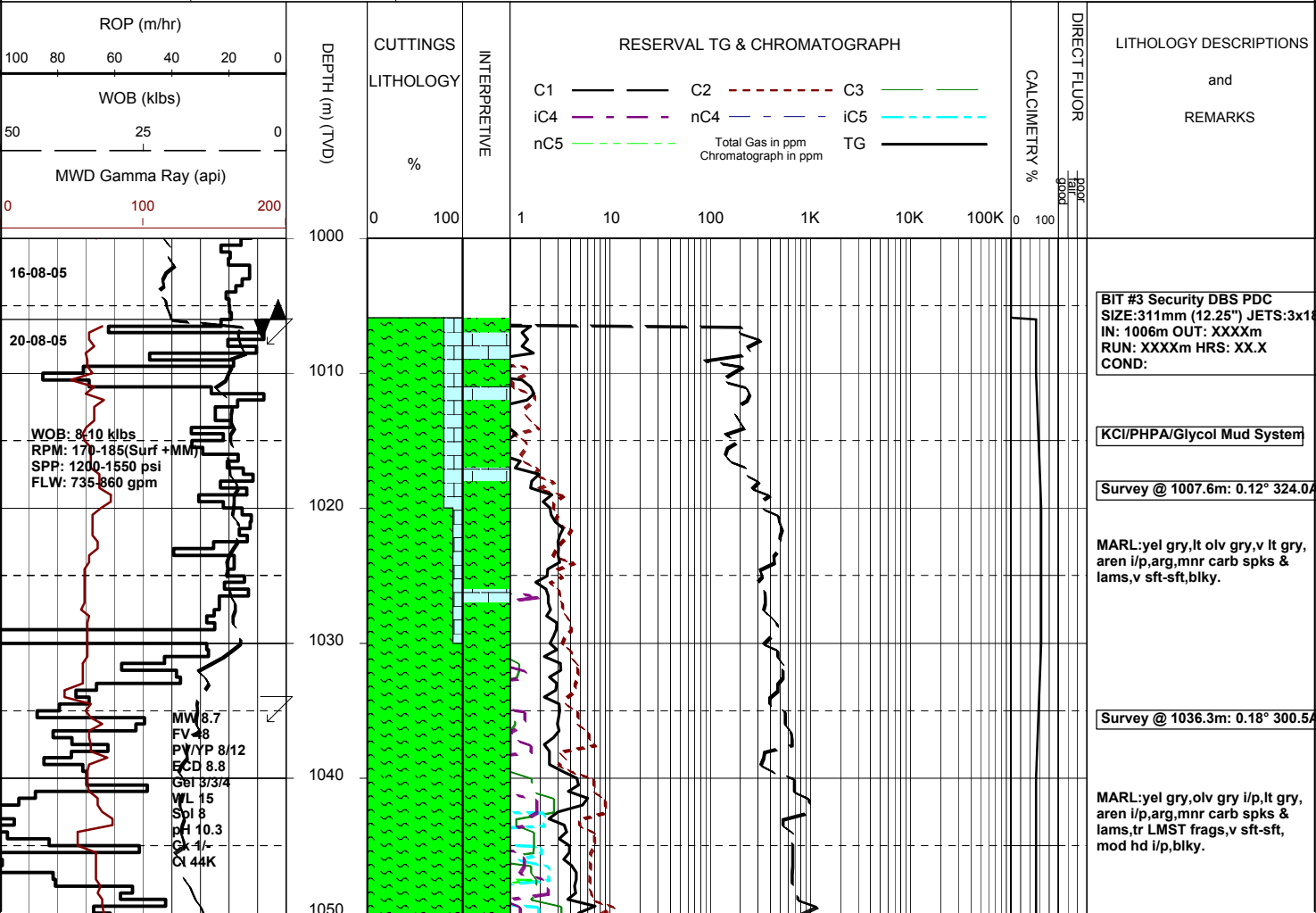


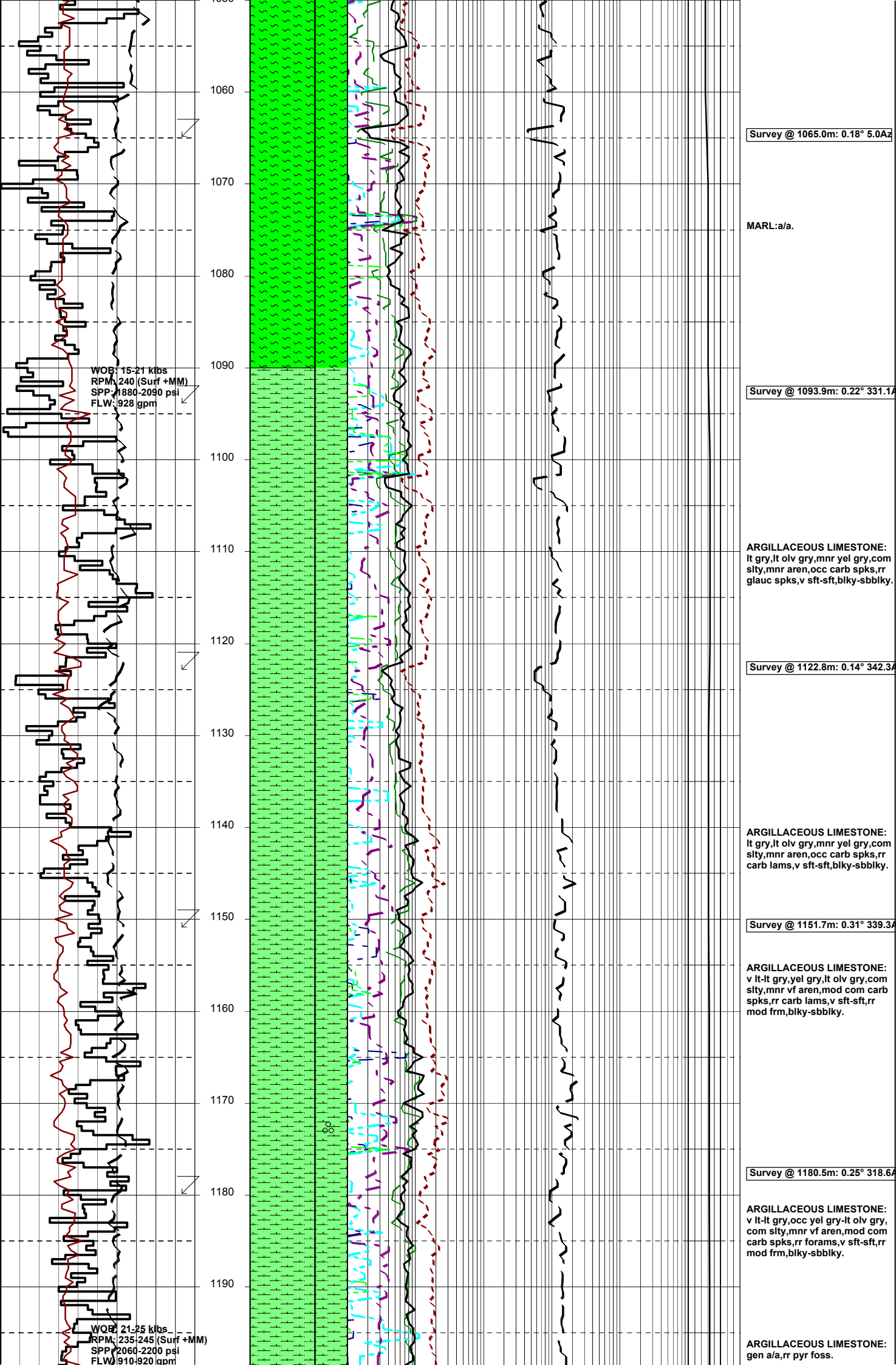
MASTERLOG

BASKER 2

GENERAL	POSITION	HOLE / CASING INFO	DATE / DEPTH	ENGINEERS
Country : AUSTRALIA	Latitude : 38°17'58.51"S	17 1/2" Hole to (mMDRT): 1006	Spud Date : 14-08-2005	D. ADDERLEY
Permit : VIC RL6	Longitude : 148°42'24.72"E	12 1/4" Hole to (mMDRT) :	Total Depth Date :	A. DUNN
Field : BASKER	UTM Co-ord X (m E): 649251.9	8 1/2" Hole to (mMDRT) :	Total Depth (mMDRT):	S. RAJA
Basin : GIPPSLAND	UTM Co-ord Y (m N): 5759566	30" Conductor @ (mMDRT) : 208	True Vertical Depth (mTVDS):	
Well Type : APPRAISAL	RT to MSL (m): 21.5	13 3/8" Shoe @ (mMDRT) : 1000	Log Scale : 1/ 500	
Rig Name : Ocean Patriot	RT to Sea Bed (m): 174	9 5/8" Shoe @ (mMDRT) :	Final Status :	

ABBREVIATIONS		LITHOLOGY LEGEND				ENGINEERING LEGEND	
MW Mud Weight	WOB Weight on Bit (klbs)	Marl	Quartzite	Siltstone	Rudists	Essai non concl	Mud loss
FV Funnel Viscosity	RPM Rotations Per Min	Clay, Sand Lime	ar. Sandstone	f to vf Sand f	Sponges	Aucun fluide re	
PV Plastic Viscosity	FLW Flow Rate (gpm)	do. Shale	bitum. Shale (b)	Fossils	Sporomorphs	TEST Test	← RFT
YP Yield Point	SPP Pump Pressure (psi)	ca. Shale	Claystone	Algae	Tigillites	Filtrat	← FIT
Gel Gel Strength	RR Re-Run Bit	sandy Shale	Fine SST	Lithic Fragment	Vertebrates	Deviation curve	DST
WL Water Loss	TG Trip Gas	si. Claystone	sa. Shale	Belemnits	Wood silicified	Mud gain	Cement
KCl Potassium Chloride	CG Connection Gas					Boué	
Cl Chlorides	BG Background Gas						
Incl Inclination	DGP Drilled Gas Peak						
Az Azimuth	MM Mud Motor						





Survey @ 1065.0m: 0.18° 5.0Az

MARL:a/a.

Survey @ 1093.9m: 0.22° 331.1Az

ARGILLACEOUS LIMESTONE:
lt gry,lt olv gry,mnr yel gry,com
silty,mnr aren,occ carb spks,rr
glauc spks,v sft-sft,blky-sbbiky.

Survey @ 1122.8m: 0.14° 342.3Az

ARGILLACEOUS LIMESTONE:
lt gry,lt olv gry,mnr yel gry,com
silty,mnr aren,occ carb spks,rr
carb lams,v sft-sft,blky-sbbiky.

Survey @ 1151.7m: 0.31° 339.3Az

ARGILLACEOUS LIMESTONE:
v lt-lt gry,yel gry,lt olv gry,com
silty,mnr vf aren,mod com carb
spks,rr carb lams,v sft-sft,rr
mod frm,blky-sbbiky.

Survey @ 1180.5m: 0.25° 318.6Az

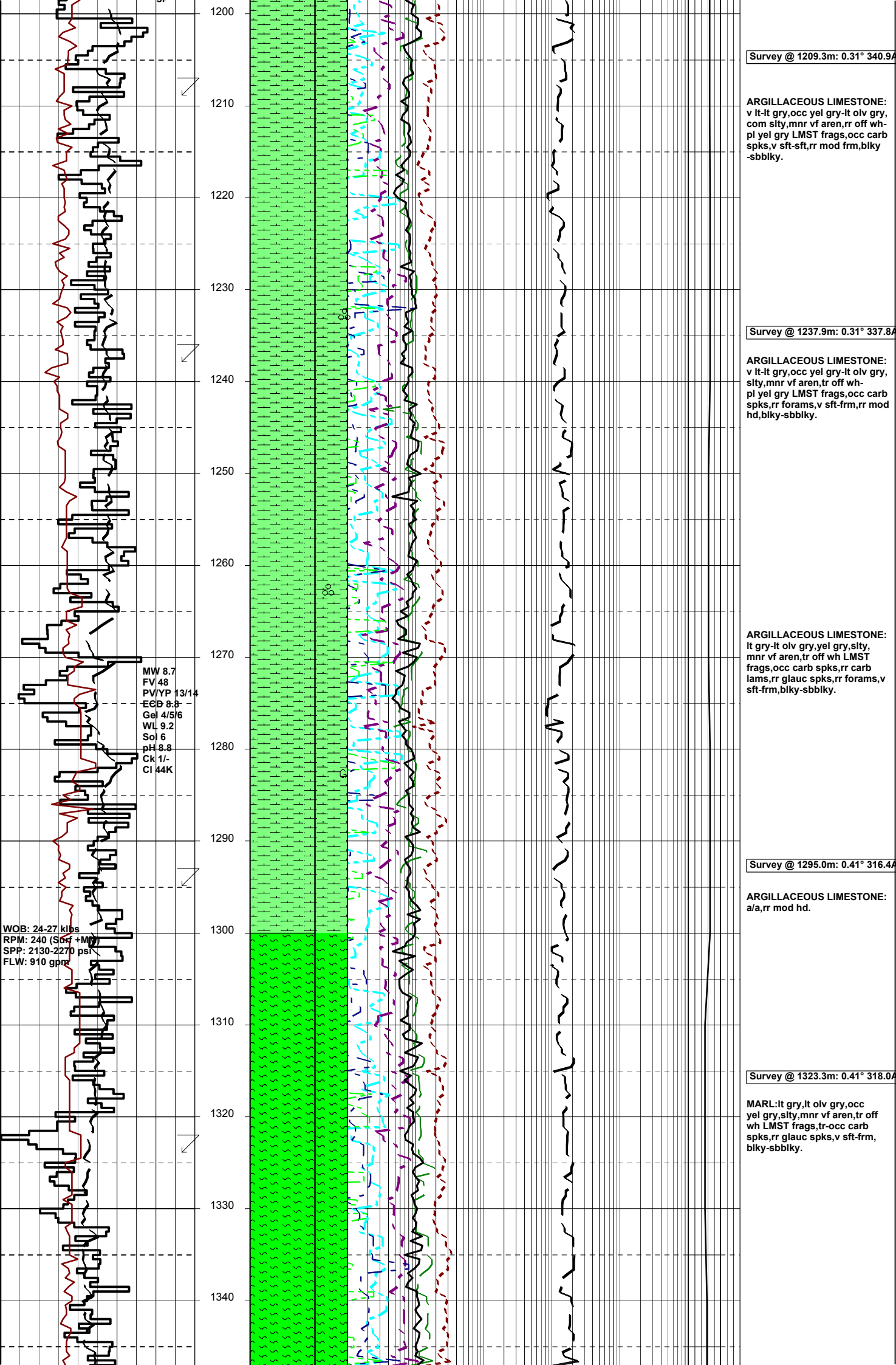
ARGILLACEOUS LIMESTONE:
v lt-lt gry,occ yel gry-lt olv gry,
com silty,mnr vf aren,mod com
carb spks,rr forams,v sft-sft,rr
mod frm,blky-sbbiky.

ARGILLACEOUS LIMESTONE:
gen a/a,rr pyr foss.

WOB: 15-21 klbs
RPM: 240 (Surf +MM)
SPP: 1880-2090 psi
FLW: 928 gpm

WOB: 21-25 klbs
RPM: 235-245 (Surf +MM)
SPP: 2060-2200 psi
FLW: 910-920 gpm

80



Survey @ 1209.3m: 0.31° 340.9A

ARGILLACEOUS LIMESTONE:
 v lt-lt gry,occ yel gry-lt olv gry,
 com slty,mnr vf aren,rr off wh-
 pl yel gry LMST frags,occ carb
 spks,v sft-sft,rr mod frm,blky
 -sbbiky.

Survey @ 1237.9m: 0.31° 337.8A

ARGILLACEOUS LIMESTONE:
 v lt-lt gry,occ yel gry-lt olv gry,
 slty,mnr vf aren,tr off wh-
 pl yel gry LMST frags,occ carb
 spks,rr forams,v sft-frm,rr mod
 hd,blky-sbbiky.

ARGILLACEOUS LIMESTONE:
 lt gry-lt olv gry,yel gry,slty,
 mnr vf aren,tr off wh LMST
 frags,occ carb spks,rr carb
 lams,rr glauc spks,rr forams,v
 sft-frm,blky-sbbiky.

Survey @ 1295.0m: 0.41° 316.4A

ARGILLACEOUS LIMESTONE:
 a/a,rr mod hd.

Survey @ 1323.3m: 0.41° 318.0A

MARL:lt gry,lt olv gry,occ
 yel gry,slty,mnr vf aren,tr off
 wh LMST frags,tr-occ carb
 spks,rr glauc spks,v sft-frm,
 blky-sbbiky.

MW 8.7
 FV 48
 PV/YP 13/14
 ECD 8.8
 Gel 4/5/6
 WL 9.2
 Sol 6
 pH 8.8
 Ck 1/-
 CI 44K

WOB: 24-27 kips
 RPM: 240 (S&M)
 SPP: 2130-2270 psi
 FLW: 910 gpm

1200
1210
1220
1230
1240
1250
1260
1270
1280
1290
1300
1310
1320
1330
1340

Survey @ 1351.8m: 0.50° 308.2

MARL:lt gry,lt olv gry,occ yel gry,slty,mnr vf aren,tr off wh LMST frags,tr-occ carb spks,tr glauc spks,rr forams,rr pyr foss,sft frm,blky-sbbiky.

Survey @ 1380.3m: 0.45° 323.7

MARL:lt gry,lt olv gry,yel gry,slty,vf aren i/p,tr-occ carb spks,tr glauc spks,sft frm,sbbiky-blky.

CALCARENITE:lt yel brn,vf grad to aren MARL,pr srt,sa-sr,wk-mod calc cmt abdt brn slty mtx, fri-occ mod hd,v pr vis por,no fluor.

Survey @ 1408.9m: 0.56° 313.7

ARGILLACEOUS LIMESTONE: yel gry,lt olv gry,gry,slty,vf aren i/p,occ carb spks,rr glauc spks,v sft frm,sbbiky-blky,amorph.

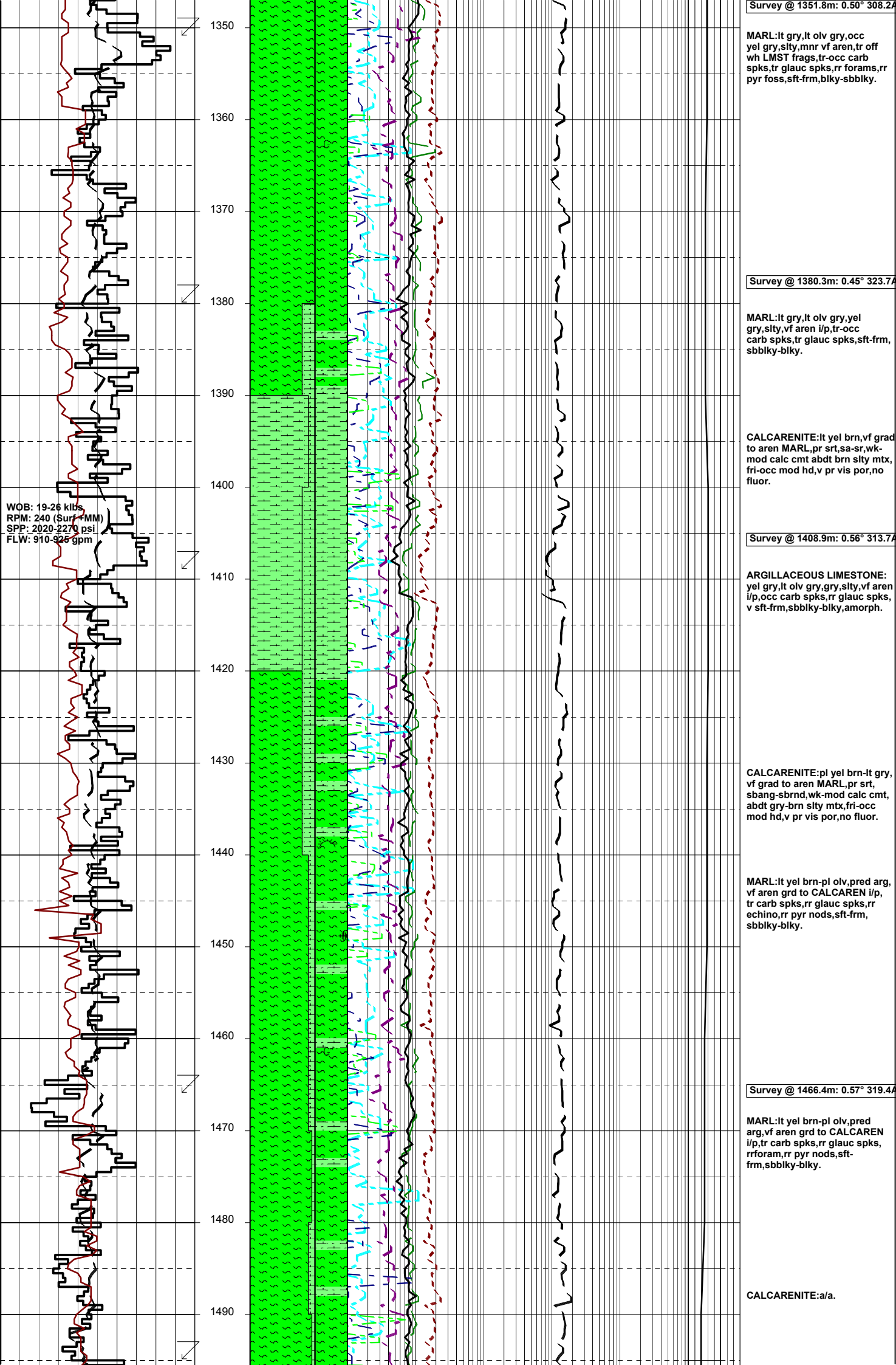
CALCARENITE:pl yel brn-lt gry,vf grad to aren MARL,pr srt, sbang-sbrnd,wk-mod calc cmt, abdt gry-brn slty mtx, fri-occ mod hd,v pr vis por,no fluor.

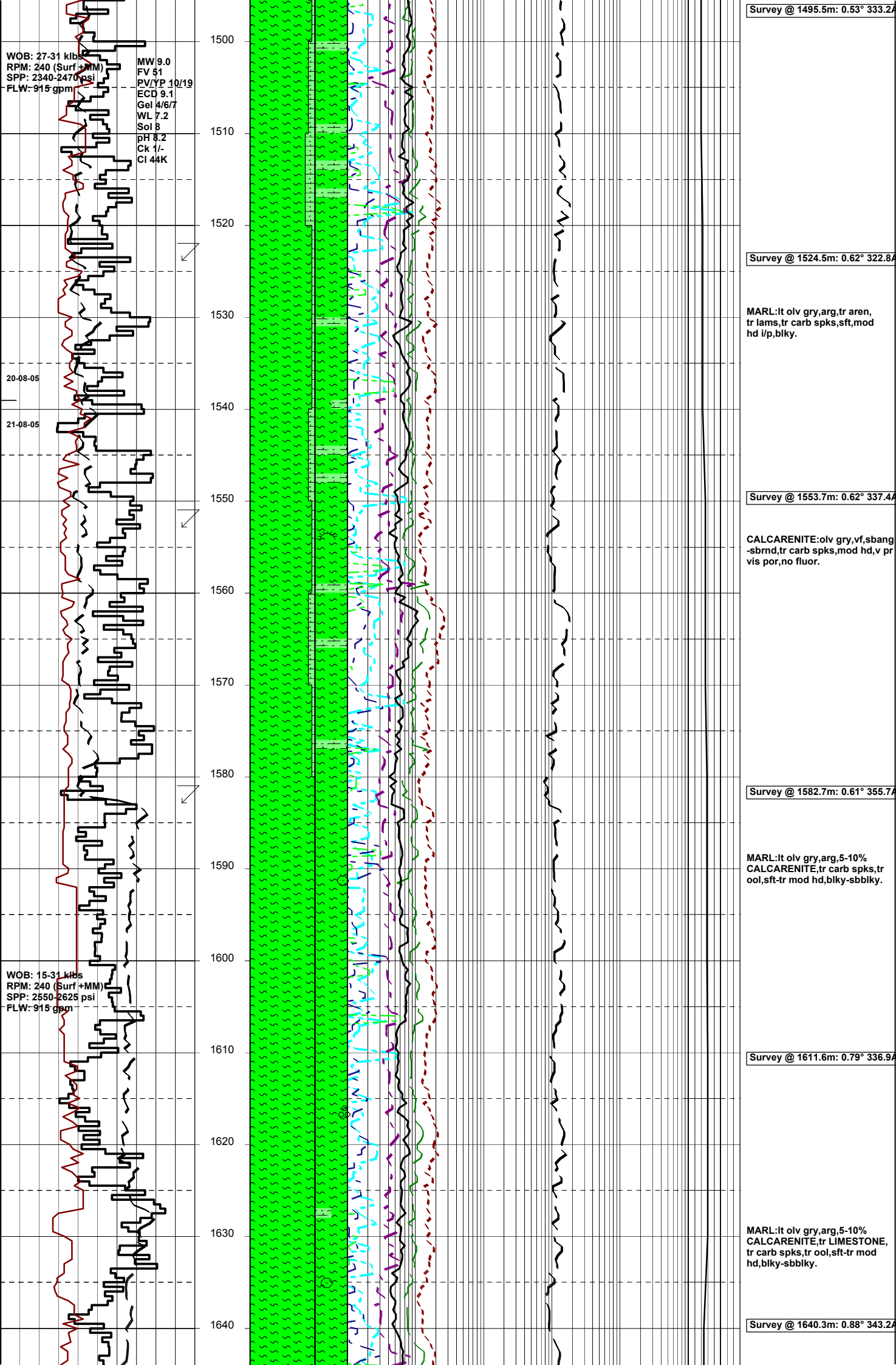
MARL:lt yel brn-pl olv,pred arg,vf aren grd to CALCAREN i/p, tr carb spks,rr glauc spks,rr echino,rr pyr nods,sft frm,sbbiky-blky.

Survey @ 1466.4m: 0.57° 319.4

MARL:lt yel brn-pl olv,pred arg,vf aren grd to CALCAREN i/p, tr carb spks,rr glauc spks, rrforam,rr pyr nods,sft frm,sbbiky-blky.

CALCARENITE:a/a.





WOB: 27-31 klbs
 RPM: 240 (Surf +MM)
 SPP: 2340-2470 psi
 FLW: 915 gpm

MW 9.0
 FV 51
 PV/YP 10/19
 ECD 9.1
 Gel 4/6/7
 WL 7.2
 Sol B
 pH 8.2
 Ck 1/-
 CI 44K

20-08-05
 21-08-05

WOB: 15-31 klbs
 RPM: 240 (Surf +MM)
 SPP: 2550-2625 psi
 FLW: 915 gpm

Survey @ 1495.5m: 0.53° 333.2A

Survey @ 1524.5m: 0.62° 322.8A

Survey @ 1553.7m: 0.62° 337.4A

Survey @ 1582.7m: 0.61° 355.7A

Survey @ 1611.6m: 0.79° 336.9A

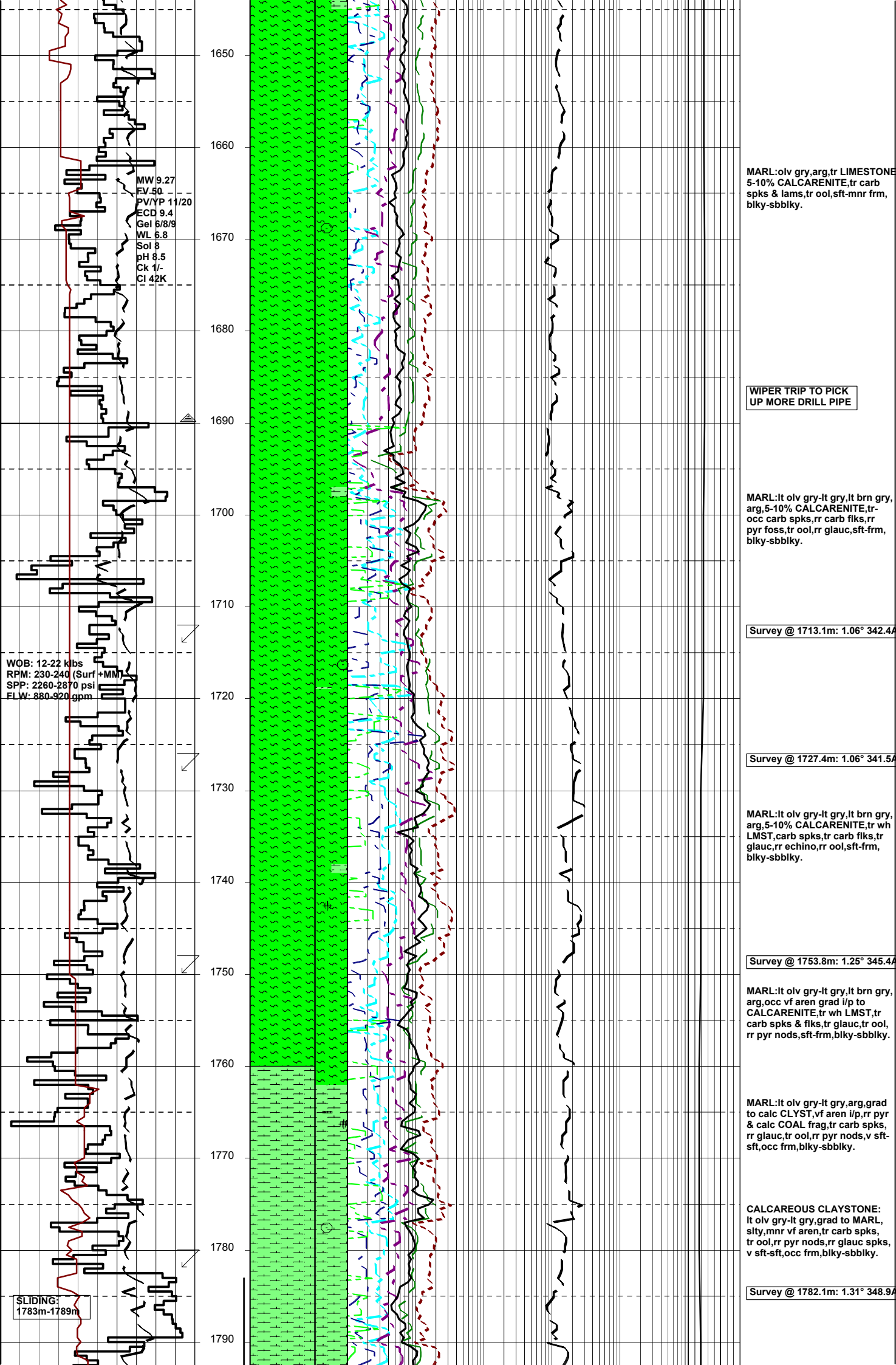
Survey @ 1640.3m: 0.88° 343.2A

MARL: lt olv gry, arg, tr aren, tr lams, tr carb spks, sft, mod hd i/p, blkly.

CALCARENITE: olv gry, vf, sbang -sbrnd, tr carb spks, mod hd, v pr vis por, no fluor.

MARL: lt olv gry, arg, 5-10% CALCARENITE, tr carb spks, tr ool, sft-tr mod hd, blkly-sbbkly.

MARL: lt olv gry, arg, 5-10% CALCARENITE, tr carb spks, tr ool, sft-tr mod hd, blkly-sbbkly.



MW 9.27
 EV 50
 PV/YP 11/20
 ECD 9.4
 Gel 8/8/9
 WL 6.6
 Sol 8
 pH 8.5
 Ck 1/-
 CI 42K

WOB: 12-22 klbs
 RPM: 230-240 (Surf +MM)
 SPP: 2260-2870 psi
 FLW: 880-920 gpm

SLIDING:
 1783m-1789m

MARL: olv gry, arg, tr LESTONE
 5-10% CALCARENITE, tr carb
 spks & lams, tr ool, sft-mnr frm,
 blk-y-sbbiky.

WIPER TRIP TO PICK
 UP MORE DRILL PIPE

MARL: lt olv gry-lt gry, lt brn gry,
 arg, 5-10% CALCARENITE, tr-
 occ carb spks, rr carb flks, rr
 pyr foss, tr ool, rr glauc, sft-frm,
 blk-y-sbbiky.

Survey @ 1713.1m: 1.06° 342.4A

Survey @ 1727.4m: 1.06° 341.5A

MARL: lt olv gry-lt gry, lt brn gry,
 arg, 5-10% CALCARENITE, tr wh
 LMST, carb spks, tr carb flks, tr
 glauc, rr echino, rr ool, sft-frm,
 blk-y-sbbiky.

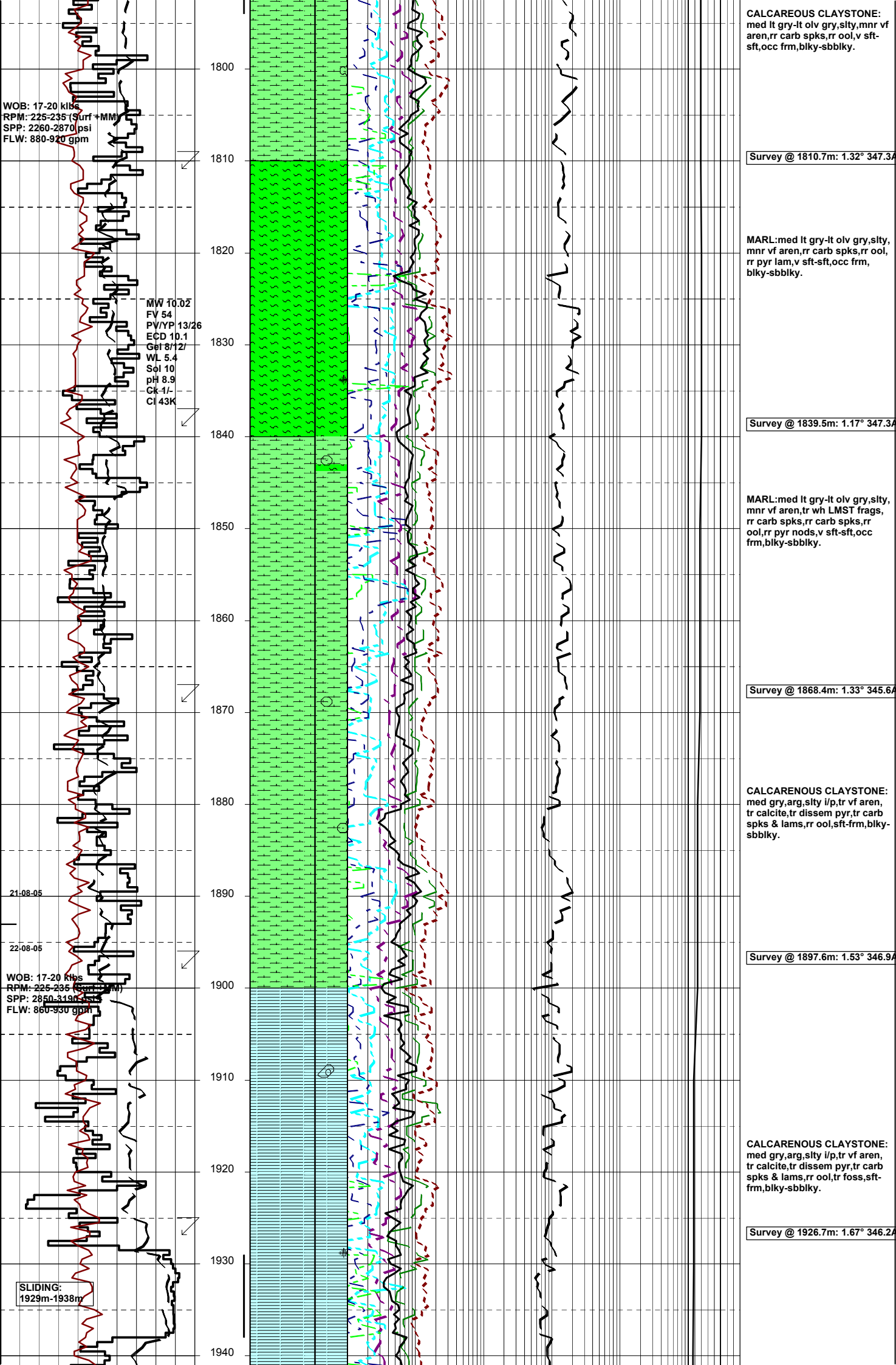
Survey @ 1753.8m: 1.25° 345.4A

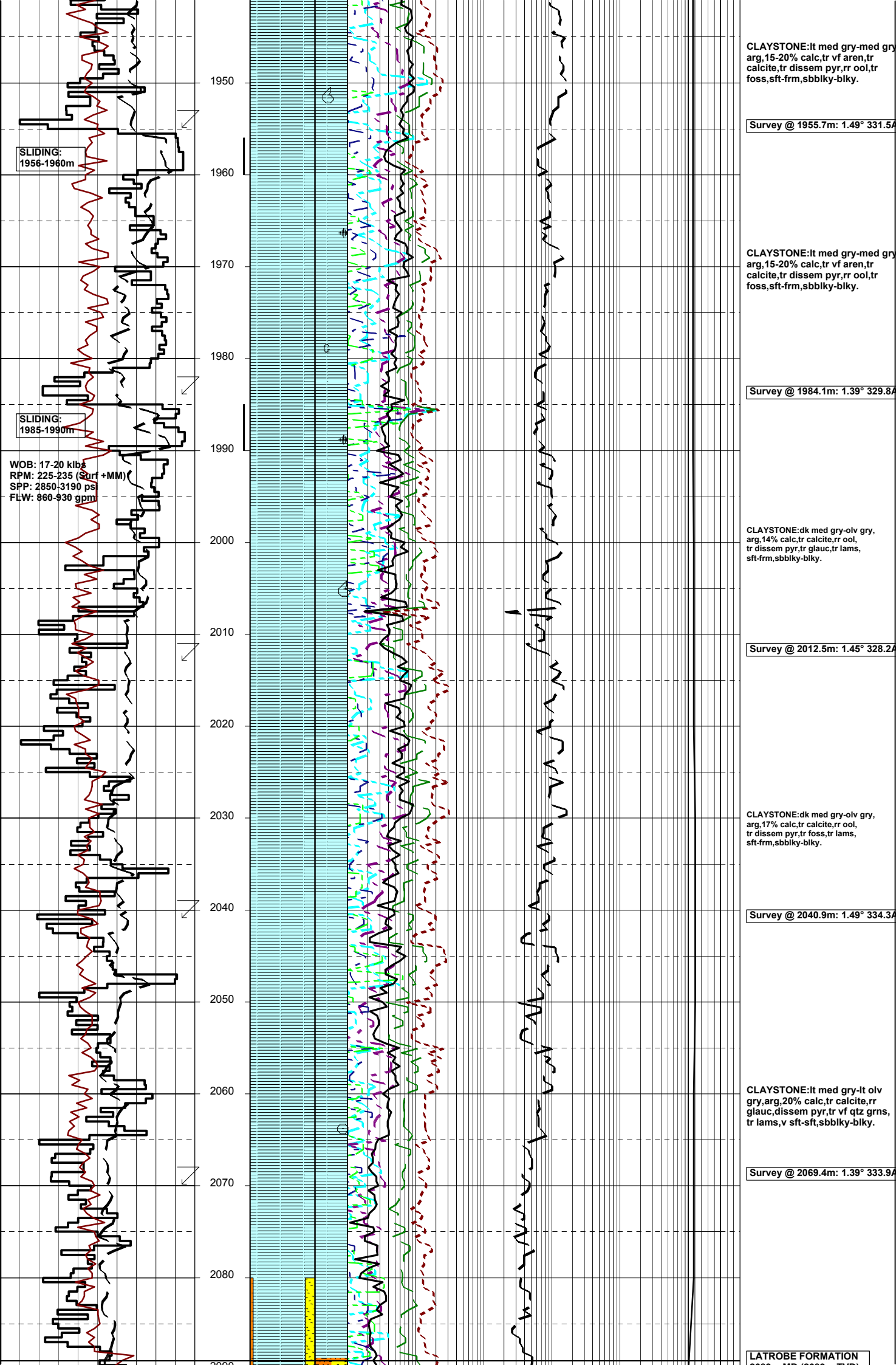
MARL: lt olv gry-lt gry, lt brn gry,
 arg, occ vf aren grad i/p to
 CALCARENITE, tr wh LMST, tr
 carb spks & flks, tr glauc, tr ool,
 rr pyr nods, sft-frm, blk-y-sbbiky.

MARL: lt olv gry-lt gry, arg, grad
 to calc CLYST, vf aren i/p, rr pyr
 & calc COAL frag, tr carb spks,
 rr glauc, tr ool, rr pyr nods, v sft-
 sft, occ frm, blk-y-sbbiky.

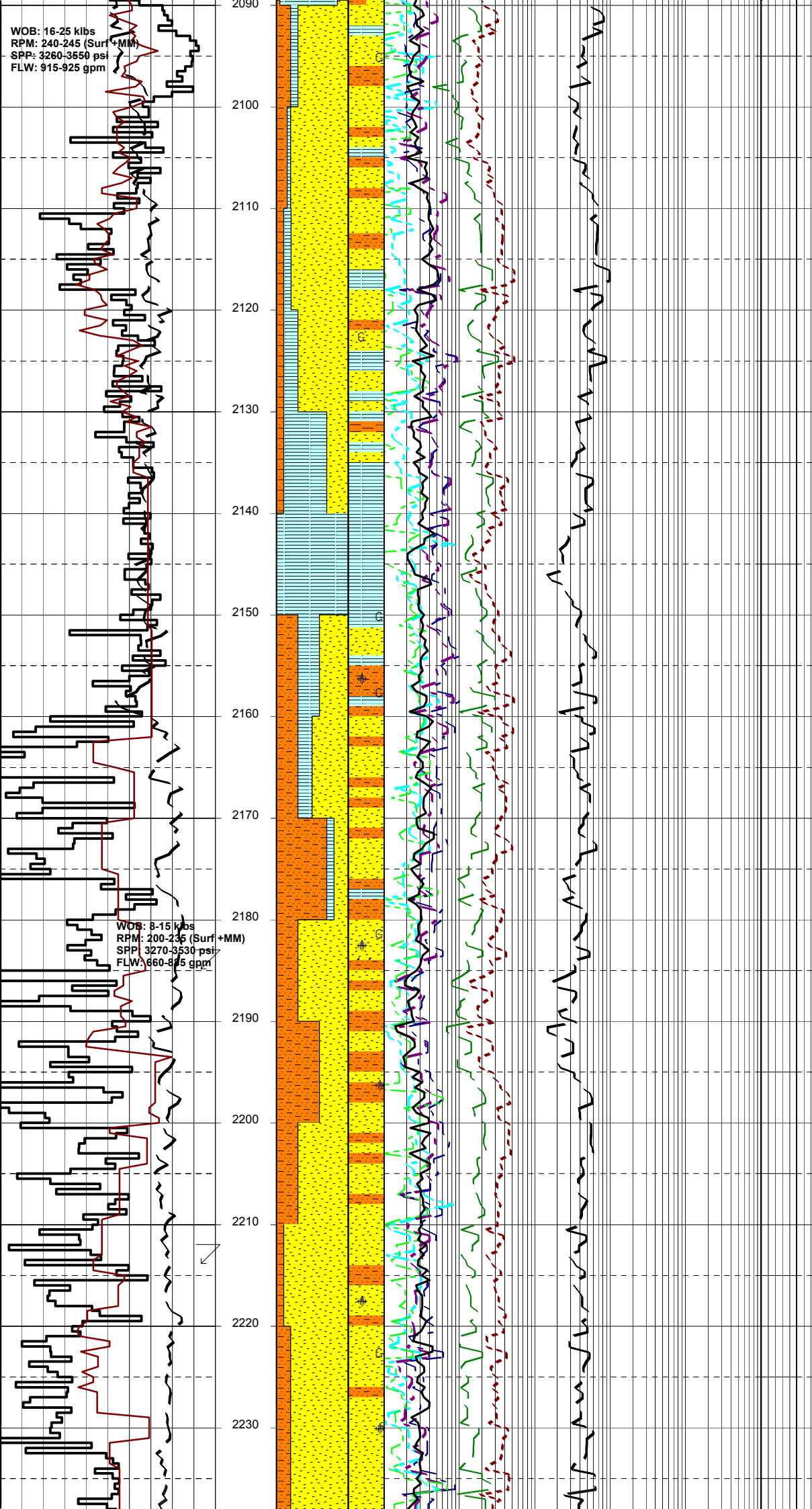
CALCAREOUS CLAYSTONE:
 lt olv gry-lt gry, grad to MARL,
 silty, mnr vf aren, tr carb spks,
 tr ool, rr pyr nods, rr glauc spks,
 v sft-sft, occ frm, blk-y-sbbiky.

Survey @ 1782.1m: 1.31° 348.9A





WOB: 16-25 klbs
RPM: 240-245 (Surf +MM)
SPP: 3260-3550 psi
FLW: 915-925 gpm



SANDSTONE:clr,dom trnsI,dom med,mnr crs-v crs,mod srt, sbang-sbrnd,tr Fe stn,com glauc cin & lse,fr por,no fluor.

SILTSTONE:lt brn,pl rd prpl,lt gr aren,kaol i/p,Fe stn i/p,com glauc & qtz grs,frm-mod hd i/p,blky.

SANDSTONE:clr,dom trnsI,fstd, dom vf-f,mnr med-v crs,mod srt sbang-sbrnd,slty mtX,tr wk calc cmt,com glauc,dom lse,ti por,no fluor.

CLAYSTONE:lt olv gry-olv gry, slty,rr vf aren,rr med qtz grs, tr glauc inclS,calc i/p,rr carb spks,rr dissep pyr,v sft-disp, sbbkly-amorph.

SILTSTONE:lt olv gry,mott grn gry/mod grn,arg,com aren grad to slty SST,com glauc,occ calc, nodS, tr pyr,v sft-disp,sbbkly -amorph.

SANDSTONE:clr,trnsI,frstd,off wh,f-med,rr crs,mod wl srt, sbrnd-pred sbang,wk sil cmt,occ wk calc com wh kaol mtX,tr glauc inclS,lse-fri,v pr vis por,pr inf por,no fluor.

Survey @ 2184.6m: 1.56° 330.8A

WOB: 8-15 klbs
RPM: 200-235 (Surf +MM)
SPP: 3270-3530 psi
FLW: 660-875 gpm

SANDSTONE:clr,trnsI,frstd, mott mod grn/wh,f-med,occ crs, mod pr srt,sbang-sbrnd,mnr crs md,wk sil cmt,tr wk calc cmt, occ wh kaol mtX,tr glauc & pyr mtX,lse-fri,v pr vis por,fr inf por, no fluor.

SILTSTONE:med lt olv gry-lt olv gry,occ mott wh/gry,pred aren & grad to slty SST,com arg,tr calc, tr-occ carb spks,tr-occ dissep & nod pyr,rr glauc inclS,v sft-disp,sbbkly-amorph.

Survey @ 2213.6m: 1.69° 337.5A

SANDSTONE:clr,trnsI,frstd,lt gry,mott mod grn/gry,f-crs,com v crs,pr srt,sbang-sbrnd,com polshd,wk sil cmt,tr wk calc cmt, occ wh kaol & gry slty mtX,tr glauc & pyr inclS,lse-fri,v pr vis por,fr inf por,no fluor.

